

INTERIOR ACCESS PANELS



MODEL CP



MODEL PW



MODEL PWE



MODEL CT



MODEL WB

CONCEALED FRAME FLUSH ACCESS PANELS FOR DRYWALL OR PLASTER: WB, PW, PWE, CT and CP Series

WB: Wallboard Bead (Wall or Ceiling)

Frame: 16 gauge with 1" drywall bead that can be taped and mudded
Door: Paintable, 16 gauge steel with concealed continuous hinge
Finish: Gray baked enamel primer

PW: Plaster (Wall or Ceiling)

Frame: 16 gauge steel with 3/4" plasterguard for application of plaster
Door: Paintable 16 gauge steel with concealed continuous hinge
Finish: Gray baked enamel primer

PWE: Plaster (Wall or Ceiling)

Frame: 16 gauge steel with 3/4" plasterguard with an additional 3" wide wing of metal lath for a plaster application to the edge of the door
Door: 16 gauge steel with concealed continuous hinge
Finish: Gray baked enamel primer

CP: Recessed Panel for Plaster (Wall or Ceiling)

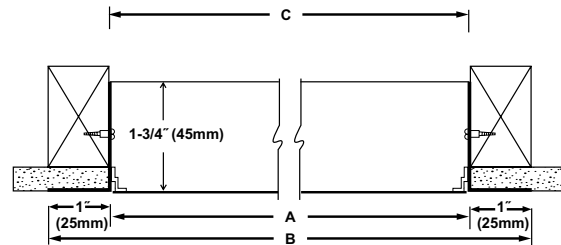
Frame: 16 gauge Steel with 3/4" plasterguard and with an additional 3" wide wing of metal lath for a plaster application to the edge of the door
Door: Metal lath over 18 gauge steel with continuous hinge
Finish: Gray primer coat over phosphate-dipped steel

CT: Recessed Door for Tile or Wallboard Insert (Wall or Ceiling)

Frame: Paintable, 16 gauge steel
Door: 16 gauge steel, recessed 1" for tile or drywall covering with continuous hinge
Finish: White primer coat

Lock: Flush screwdriver-operated steel cam.

Options: Cylinder lock with two keys can be key-coordinated to fit JL Fire extinguisher cabinets as well. Hex head cam. See page 8.



Model WB Wall Installation (Top View)

Door Sizes and Wall Openings						
Dimensions in Inches • Weight in Pounds						
A-Model Size	C-Wall Opening Dimension			Shipping Weight		Latch(es)
	WB	PW & PWE	CT & CP	WB,PW,PWE, CT	CP	
8" x 8"	8 1/2" x 8 1/2"			4 lbs.		1
10" x 10"	10 1/2" x 10 1/2"			5 lbs.		1
12" x 12"	12 1/2" x 12 1/2"	12 1/4" x 12 1/4"	12 1/4" x 12 1/4"	7 lbs.	9 lbs.	1
12" x 24"			12 1/4" x 24 1/4"	11 lbs.	14 lbs.	2
14" x 14"	14 1/2" x 14 1/2"			8 lbs.		1
16" x 16"		16 1/4" x 16 1/4"		10 lbs.		1
16" x 20"		16 1/4" x 20 1/4"		12 lbs.		2
18" x 18"	18 1/2" x 18 1/2"	18 1/4" x 18 1/4"	18 1/4" x 18 1/4"	12 lbs.	14 lbs.	1 or 2
22" x 22"	22 1/2" x 22 1/2"			16 lbs.		3
22" x 30"	22 1/2" x 30 1/2"		22 1/4" x 30 1/4"	21 lbs.	21 lbs.	4
24" x 24"	24 1/2" x 24 1/2"	24 1/4" x 24 1/4"	24 1/4" x 24 1/4"	19 lbs.	20 lbs.	3 or 4
24" x 36"			24 1/4" x 36 1/4"	27 lbs.	31 lbs.	3

Custom Sizes and Special Modifications Available Upon Request